



# LEELANAU TOWNSHIP COMMUNITY FOUNDATION

— *Serving our Community since 1945* —

## Untimely Death Leads to a Lasting Legacy

When Gilman Marston Dame was killed in a car-train accident just north of Suttons Bay in 1939, his death rocked Leelanau Township and the County. Dame was a Northport businessman, community leader and friend to many. His untimely death was a loss to the area. In 1945, to commemorate Dame and his contributions to the community, his friend and business partner, Francis Haserot, donated \$35,000 – a significant sum at that time – to create a foundation for



the betterment of Leelanau Township. Haserot was a Cleveland, Ohio businessman who spent time at his summer home in Northport and owned the Northport Cherry Factory. Dame managed the cherry factory. Cleveland was home to the country's first community foundation and Haserot was involved with that, so he knew how to establish an entity that could continue into the future and would be committed to his vision for helping to meet the needs and opportunities of Leelanau Township and its residents.

Eventually, the foundation that Haserot created became the Leelanau Township Community Foundation (LTCF). From the beginning,



the breadth of the needs that the LTCF helped with was impressive. Education, recreation and programs for area youth have been areas that the foundation has supported from its earliest years. The arts, conservation, preservation, and wellness have also been major areas of giving.

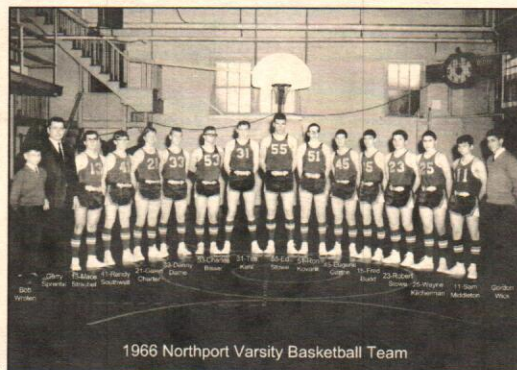
### Helping to Create Public Parks and Recreation Programs

From its earliest days, the LTCF was a major supporter of the Leelanau Township's recreation programs. For over three decades, from 1956 through 1991, they funded the equipment for the Northport Youth Recreation Program, which was open to children from anywhere in the township. In the 1960's, they were also a major supporter of the

Northport Youth Center, which gave teenagers and preteens a place in the area to have fun.

Some of the foundation's earliest donations in the 1940's were to the Boy Scouts, Cub Scouts and Sea Scouts to help purchase equipment and a boat for the Sea Scouts.

In the 1950's and 60's, the foundation was instrumental in helping the Village of



Northport and Leelanau Township to purchase the properties that became the Northport Bathing Beach, the Omena Bathing Beach, and an addition to Peterson Park. Through the years, they helped to purchase beach equipment, lifeguard boats and equipment, the Red Cross swimming dock, and the first Northport Marina Dock project in 1960. Then, again, in 2012, through its Future By Design Fund, the foundation was a contributor to the marina improvements, including the shopper dock and the gazebo.

The foundation has helped the Northport Youth Sailing School since its inception through both grants to help with equipment and by providing scholarships for Township youth so that they can participate in this wonderful program.

The LTCF has also been a regular and significant donor to the Mill Pond Park, Braman Hill, and the Buster Dame Recreation Area which includes three ball diamonds north of Northport.



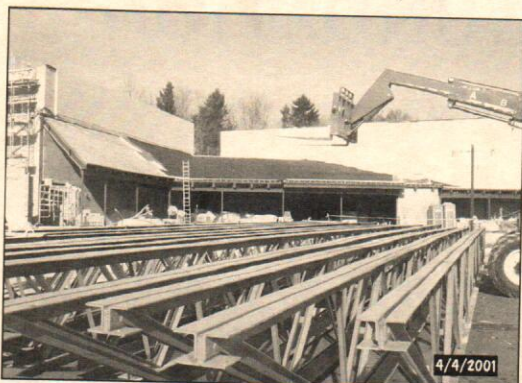
### Cultivating the Arts

Leelanau Township is fortunate to have a depth of talent and interest in all of the arts – music, drama, visual arts, and writing. In addition to promoting arts education, as mentioned above, the LTCF has helped to fund many of the community arts initiatives in the area. It was an early supporter of Music in the Park, which remains a



popular summer event in Northport. The Village Voices received several important grants from the LTCF over the years, helping them to purchase a sound system, a digital piano, sheet music and other performance supplies.

When the community had the inspiration to build a first-class



performing arts center, the LTCF was there to help with both funding and, again, providing a structure for the fund raising efforts for the Northport Community Arts Center (NCAC). Over the years,

the LTCF has continued to be a financial supporter of the NCAC.

The LTCF was one of the major sponsors of the first Leelanau Uncaged in 2013, celebrating all of the arts in the area. It continues to be a major sponsor of this exciting event.

### Supporting lifelong learning – from birth through college and beyond

Northport Public School (NPS) was one of the early recipients of a foundation grant, which allowed them to buy equipment for hot lunches in 1947. Over the years, the LTCF has helped to enrich the



opportunities at NPS by supporting a wide range of programs, including band equipment, a piano for the music program, drama programs, arts enrichment programs, National Honor

Society trips, art club trip, French class trip, leadership training, a 'Drug Free' program, playground equipment, science lab equipment, sports equipment, computers and much more.

The LTCF was a major supporter of the Children's Discovery Center from 1990 through 2005. Early childhood development and education continued to be a priority with the residents of Leelanau Township. As the Leelanau Children's Center (LCC) in Leland grew and reached national levels of excellence, the LCC and Northport began to explore expanding the program to Northport. Beginning



in 2006, and continuing through the present, the foundation was instrumental in finding a location, giving grants, and providing a structure for fund raising to make the

Northport location a reality. The LCC continues to provide the highest level of early childhood education available. It receives the highest rankings on both the State and national levels. In 2011, in memory of Basil Antenucci, the Leelanau Children's Center Scholarship Fund was established to help Leelanau Township children participate in this program.

The LTCF has numerous college scholarship funds that are available to Township residents or Northport School graduates. The Northport

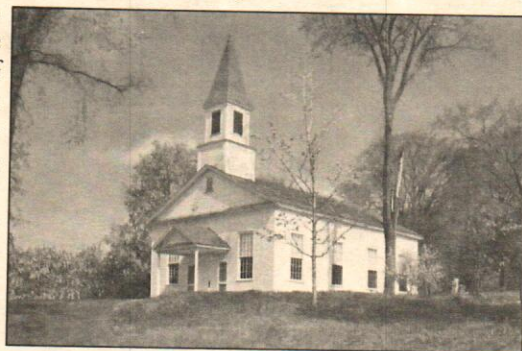


Promise is available to all NPS graduates for post-secondary education. There are a variety of other scholarships, including ones specifically for arts education, science, medical, vocational school, and others, and a scholarship fund for Native American students.

### Conservation and Preservation

The foundation has helped to conserve both the environmental and cultural treasures of Leelanau Township. Their grants have helped maintain the Grand Traverse Lighthouse and the Fox Island Lighthouse.

They were supporters of the Leelanau Conservancy for the Kehl Lake and Gull Island projects. They have been donors to the Omena Historical Society and the



Northport Area Heritage Association. Saving Birds Thru Habitat has been an LTCF grant recipient to help with building their Habitat Discovery Center. Foundation grants have helped to maintain and improve Woolsey Airport. They supported the steeple repair on the Omena Presbyterian Church.

### Health and Wellness

Having local support for the health and wellness of Leelanau Township residents has also been a priority for the foundation from its earliest years. They were a major supporter of Leelanau Memorial Hospital through the decades that it was in Northport. They currently provide funding to the Township to help with medical expenses for residents who qualify.

They are regular donors to the Leelanau Christian Neighbors Food Pantry in Northport and to its Blessings in a Backpack program.

